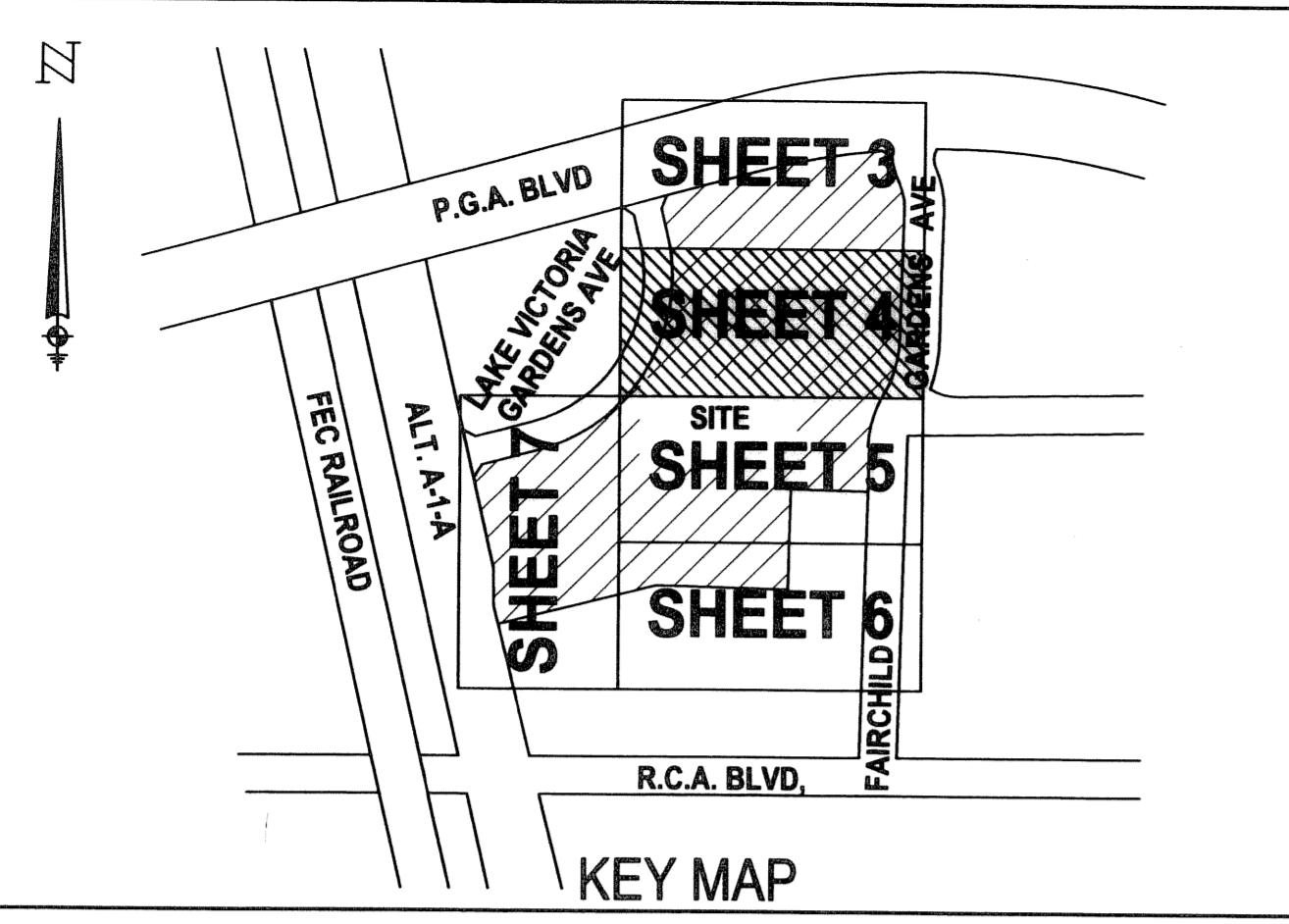
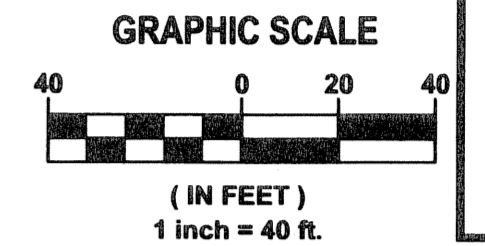


LEGACY PLACE COMMERCIAL

BEING A REPLAT OF A PORTION OF PARCEL 1, LEGACY PLACE, AS RECORDED IN PLAT BOOK 90, PAGES 119 THROUGH 121, PUBLIC RECORDS OF PALM BEACH COUNTY, FLORIDA LYING IN SECTION 6, TOWNSHIP 42 SOUTH, RANGE 43 EAST CITY OF PALM BEACH GARDENS, PALM BEACH COUNTY, FLORIDA
SHEET 4 OF 8 JULY, 2006

32

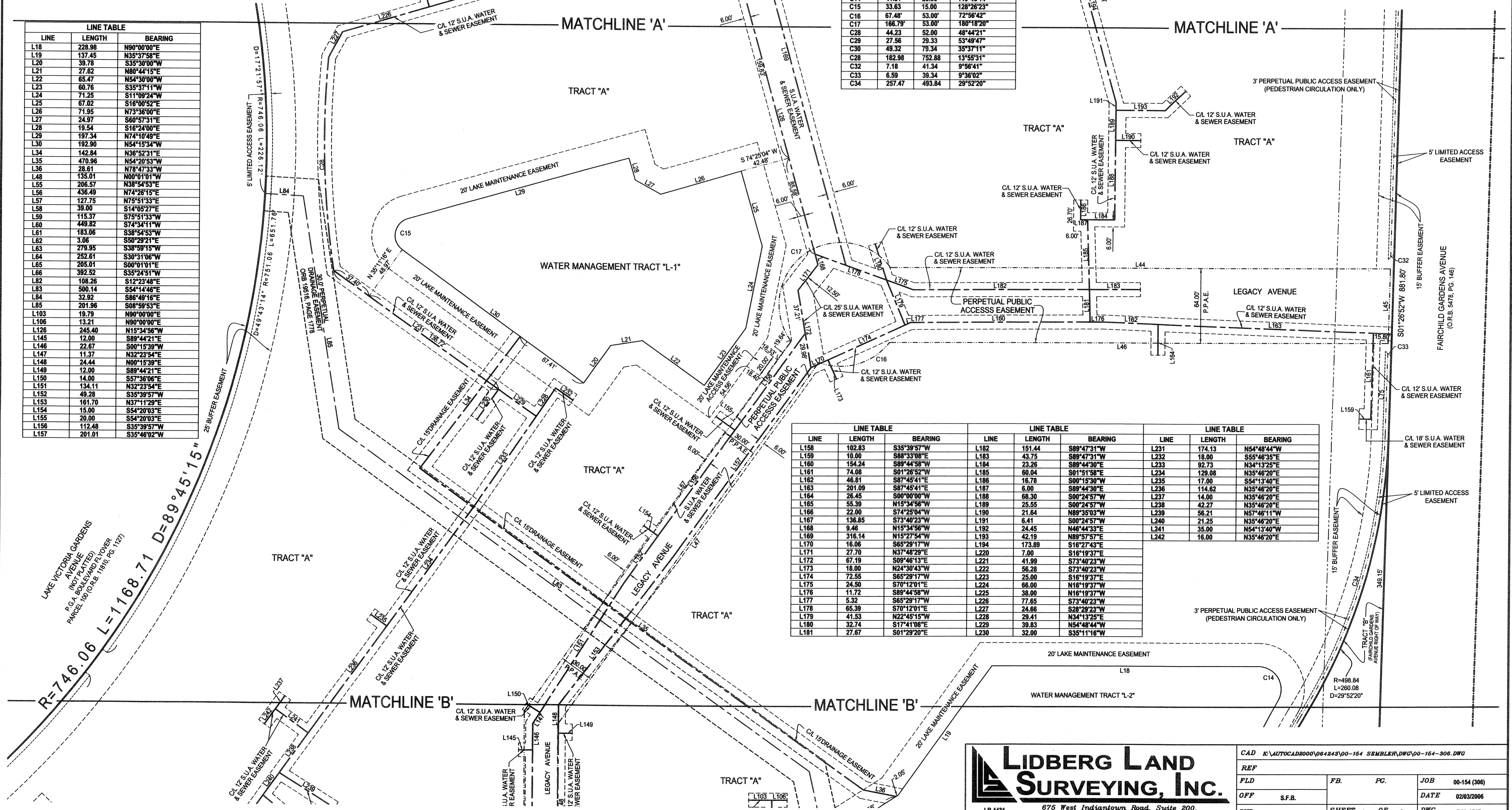
STATE OF FLORIDA
COUNTY OF PALM BEACH
This plat was filed for record at _____ M. this day of _____, 2006 and duly recorded in Plat Book No. _____ on Pages _____ thru _____
Sharon R. Beck
Clerk and Comptroller
By _____ D.C.



CURVE	LENGTH	RADIUS	CENTRAL ANGLE
C14	41.81	20.00	119°46'14"
C15	33.63	15.00	128°26'23"
C16	67.48	53.00	72°56'42"
C17	166.79	53.00	180°18'20"
C28	44.23	52.00	48°44'21"
C29	27.56	29.33	53°49'47"
C30	48.32	79.34	35°37'11"
C28	182.98	752.88	13°55'31"
C32	7.18	41.34	9°56'41"
C33	6.59	39.34	9°38'02"
C34	257.47	493.84	29°52'20"

LINE	LENGTH	BEARING
L18	228.98	N90°00'00"E
L19	137.45	N35°37'58"E
L20	39.78	S35°30'00"W
L21	27.62	N80°44'15"E
L22	65.47	N54°30'00"W
L23	60.76	S35°37'11"W
L24	71.25	S11°09'24"W
L25	67.02	S16°00'52"E
L26	71.95	N73°36'00"E
L27	24.97	S60°57'31"E
L28	19.54	S16°24'00"E
L29	197.34	N74°10'49"E
L30	142.84	N54°15'34"W
L31	142.84	N54°15'34"W
L32	470.96	N54°20'53"W
L33	28.61	N78°47'33"W
L34	135.01	N00°01'01"W
L35	206.57	N38°54'53"E
L36	436.49	N74°26'15"E
L37	127.75	N75°51'33"E
L38	39.00	S14°05'27"E
L39	115.37	S75°51'33"W
L40	449.82	S74°34'11"W
L41	183.06	S38°54'53"W
L42	3.06	S50°29'21"E
L43	279.95	S38°39'15"W
L44	252.61	S30°31'06"W
L45	205.01	S00°01'01"E
L46	392.52	S35°24'51"W
L47	108.26	S12°23'48"E
L48	500.14	S64°14'46"E
L49	32.92	S86°49'16"E
L50	201.96	S08°59'53"E
L103	19.79	N90°00'00"E
L106	13.21	N90°00'00"E
L126	245.40	N15°34'56"W
L145	12.00	S89°44'21"E
L146	22.67	S00°15'39"W
L147	11.37	N32°23'54"E
L148	24.44	N90°15'39"E
L149	12.00	S89°44'21"E
L150	14.00	S57°36'06"E
L151	134.11	N32°23'54"E
L152	49.28	S35°39'57"W
L153	161.70	N37°11'29"E
L154	15.00	S54°20'03"E
L155	20.00	S54°20'03"E
L156	112.48	S35°39'57"W
L157	201.01	S35°46'02"W

LINE	LENGTH	BEARING	LINE	LENGTH	BEARING	LINE	LENGTH	BEARING
L158	102.83	S35°39'57"W	L182	151.44	S89°47'31"W	L231	174.13	N54°48'44"W
L159	10.00	S88°33'06"E	L183	43.75	S89°47'31"W	L232	18.00	S55°48'35"E
L160	154.24	S89°44'58"W	L184	23.26	S89°44'30"E	L233	92.73	N34°13'25"E
L161	74.08	S01°26'52"W	L185	60.04	S01°15'50"E	L234	129.08	N35°46'20"E
L162	46.81	S87°45'41"E	L186	16.78	S00°15'30"W	L235	17.00	S54°13'40"E
L163	201.09	S87°45'41"E	L187	6.00	S89°44'30"E	L236	114.62	N35°46'20"E
L164	26.45	S00°00'00"W	L188	68.30	S00°24'57"W	L237	14.00	N35°46'20"E
L165	55.39	N15°34'56"W	L189	25.55	S00°24'57"W	L238	42.27	N35°46'20"E
L166	22.00	S74°25'04"W	L190	21.64	N89°35'03"W	L239	56.21	N57°46'11"W
L167	136.85	S73°40'23"W	L191	6.41	S00°24'57"W	L240	21.25	N35°46'20"E
L168	9.46	N15°34'56"W	L192	24.45	N46°44'33"E	L241	35.00	N54°13'40"W
L169	316.14	N15°27'54"W	L193	42.19	N89°57'57"E	L242	16.00	N35°46'20"E
L170	16.06	S65°29'17"W	L194	173.89	S16°27'43"E			
L171	27.70	N37°48'29"E	L220	7.00	S16°19'37"E			
L172	67.19	S09°46'13"E	L221	41.99	S73°40'23"W			
L173	18.00	N24°30'43"W	L222	56.28	S73°40'23"W			
L174	72.55	S65°29'17"W	L223	25.00	S16°19'37"E			
L175	24.50	S70°12'01"E	L224	66.00	N16°19'37"E			
L176	11.72	S89°44'58"W	L225	38.00	N16°19'37"E			
L177	5.32	S65°29'17"W	L226	77.65	S73°40'23"W			
L178	65.39	S70°12'01"E	L227	24.66	S28°29'23"W			
L179	41.53	N22°45'15"W	L228	29.41	N34°13'25"E			
L180	32.74	S17°41'08"E	L229	39.83	N54°48'44"W			
L181	27.67	S01°29'20"E	L230	32.00	S35°11'16"W			



LIDBERG LAND SURVEYING, INC.
LB 4431 675 West Indian Town Road, Suite 200, Jupiter, Florida 33459 TEL 561-746-8454

CAD	K:\AUTOCAD2000\064243\00-154-SEMPLER.DWG\00-154-306.DWG		
REF	FLD	PB.	FC.
OFF	S.F.B.		JOB 00-154 (306)
CKD	D.C.L.	SHEET 4 OF 8	DATE 02/03/2006
			DWG D00-154P